

# Backflow preventer

type EA - fluid category 2

AT 1159

Article number	RS K	Ener gy class	Applic ation	Performanc e	Fluid catego ry	Connect ion type	Mat eria l	D N
This row is for filter (IFB)/header codes (R):								
			F	F,R	F	F	F	1 / R
1159-10M	5 0 2 1 0 6 9			Complete protec- tion mod- ule	2	Threa d	Br as s	1 0
1159-15M	5 0 2 1 0 7 0			Complete protec- tion mod- ule	2	Threa d	Br as s	1 5
1159-20M	5 0 2 1 0 7 1			Complete protec- tion mod- ule	2	Threa d	Br as s	2 0
1159-25M	5 0 2 1 0 7 2			Complete protec- tion mod- ule	2	Threa d	Br as s	2 5
1159-32M	5 0 2 1 0 7 3			Complete protec- tion mod- ule	2	Threa d	Br as s	3 2

# Backflow preventer

type EA - fluid category 2

AT 1159

Article number	RS K	Ener gy class	Applic ation	Performanc e	Fluid catego ry	Connect ion type	Mat erial	D N
1159-40M	5 0 2 1 0 7 4			Complete protec- tion mod- ule	2	Threa d	Br as s	4 0
1159-50M	5 0 2 1 0 7 5			Complete protec- tion mod- ule	2	Threa d	Br as s	5 0
1159-10	4 9 6 0 8 0 1			Only pre- venter	2	Threa d	Br as s	1 0
1159-15	4 9 6 0 8 0 2			Only pre- venter	2	Threa d	Br as s	1 5
1159-20	4 9 6 0 8 0 3			Only pre- venter	2	Threa d	Br as s	2 0
1159-25	4 9 6 0 8 0 4			Only pre- venter	2	Threa d	Br as s	2 5

Rätten till ändringar utan föregående meddelande förbehålls.  
Armatec ansvarar inte för eventuella tryckfel eller missförstånd.  
Dokumentet får kopieras endast i sin helhet.

# Backflow preventer

type EA - fluid category 2

AT 1159

Article number	RS K	Ener gy class	Applic ation	Performanc e	Fluid catego ry	Connect ion type	Mat eria l	D N
1159-32	4 9 6 0 8 0 5			Only pre- venter	2	Threa d	Br as s	3 2
1159-40	4 9 6 0 8 0 6			Only pre- venter	2	Threa d	Br as s	4 0
1159-50	4 9 6 0 8 0 7			Only pre- venter	2	Threa d	Br as s	5 0

Dimension range	PN	Temperature range	Material
G 3/8 - G 2	10	0 °C to 95 °C	Brass
DN 8 - DN 50	10	0 °C to 95 °C	Brass

## Range of Application

To protect drinking water systems internally and externally from siphon backflow and pressure overload backflow. Prevention coverage for fluid categories 1-2. Back flow preventer is of the type EA in accordance with SS-EN 1717.

### PSG.262 Backflow Protection with check valve

Check valve, controllable, by DZR brass

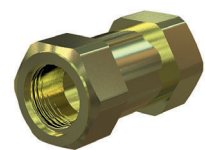
AT 1159 -xx internal thread

AT 1159 xxK compression fitting

AT 1159 -XXL soldered connection

AT 1159 XXP press connection

AT 1159 xxM complete protection module incl. ball valve with internal thread



AT 1159

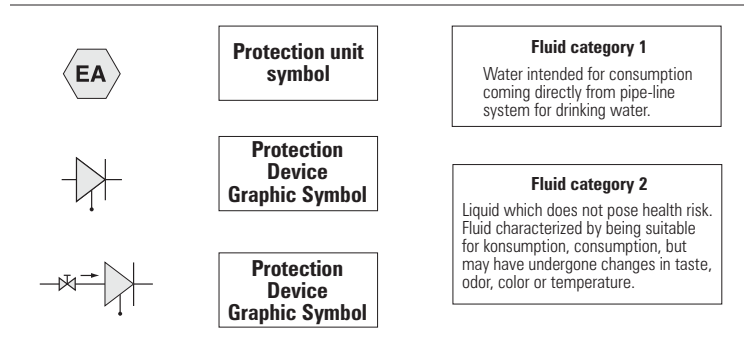
## Material Specification

1	Housing	DZR Brass
2	Seal ring	NBR/SBR
3	Globe with guide	POM polymer
4	Spring	Stainless steel EN 1.4301

# Backflow preventer

type EA - fluid category 2

AT 1159



## Dimension and Weight

AT 1159 with internal thread							
Connection	G 3/8	G 1/2	G 3/4	G 1	G 1 1/4	G 1 1/2	G 2
A	46	46	70	74	84	101	113
B	28	28	46	46	54	59	70
C	17	17	25	25	30	34	39
Weight	0,14	0,10	0,43	0,33	0,5	0,75	0,95

## Function and Design

The valve has a spring loaded globe, which means that it can be installed in any mounting position, and is closing before the flow turns back.

For the check valve 1159 to meet the demands from SS-EN 1717 as protection module type EA, a shut-off valve must always be mounted shortly before the check valve.

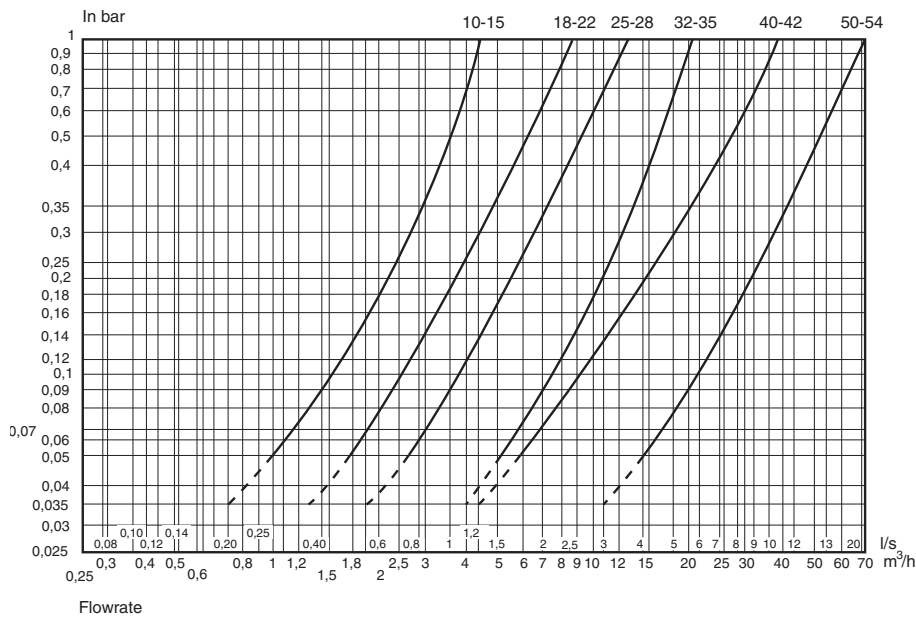
To meet the requirement of SS-EN1717 protection module type EA a shut off valve must always be installed just before the check valve and is necessary in order to control the protection function. The check valve is of type EA and provides protection up to and including category 2. The valve has upstream an outlet, which is equipped with a plug. The outlet is used to control the valve function and tightness.

# Backflow preventer

type EA - fluid category 2

AT 1159

## Pressure drop for water



## Accessories and Option

In need of larger dimension, select controllable check valve AT 1161 which is for DN 50-200 in flanged design. In order for this check valve to meet the requirement of SS-EN1717 protective module type EA, a shut off valve must always be installed just before the check valve.

## Marking

Manufacturer, DN, material and flow direction arrow.

## How to order

### Example: AT 1159-22K

AT 1159	-22	K
Fig. no.	DN	Connection/performance
	10-50	Internal thread (standard)
	8-28	K=compression coupling
	15-54	L=soldering union
	15-54	P=press coupling
	10-50	M=Protection module incl. ball valve (only internal thread)