

Internet_Variants

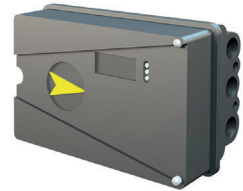
Range of Application

Digital positioner for control of double and single acting pneumatic actuators AT 3830, AT 3831.

Function design

The valve's limit switch's task is to through a given control signal from the regulator to control actuators in the given opening degree. There are different variants for double and single acting pneumatic actuators.

A modular system is available as an accessory, see the section "Accessories and options".



Accessories and options

Modules for feedback, limit switches and gauge block. These modules can be factory mounted or retrofitted after need. The modules can include the following:

Feedback 4-20 mA and one of the following functions:

- 2st mechanical contacts
- 2 st reed elements
- 2st inductive sensor Namur 19234