

Puls/LON-converter

For water- warm water meter

AT 7530-LL15

Internet variants

Range of application

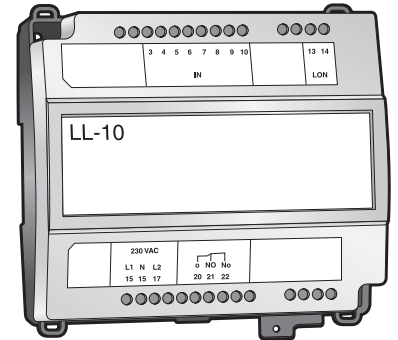
AT 7530-LL15 is a series of read-through modules that can read, process and transmit measured media consumption through a LONWORKS® network. The use of four active S0 inputs makes the LL-15 both cost-effective and independent of the media being measured. For example, the four inputs on a meter can be used to measure electricity, hot water, cold water and heat.

Accumulated number of pulses are presented as actual metering value via the LONWORKS® network.

Function and design

The AT 7530-LL15 water meter terminal is cost-effective and manages up to four measurement inputs for pulse-based meters. Each measuring input registers pulses and presents them as measuring settings.

The AT 7530-LL15 contains a simplified LON interface for both function and network variable types. The AT 7530-LL15 has been designed to be easy to use with collection systems that require simple SNVT types.



AT 7530-LL15

Technical information

LonWorks®-communication:	Pair-twisted frypology TP/FT-10, 78 kbps & PLC, C-band
Input:	'Up to four S0 pulses acc. to SS-EN 62053-31 samt "Open-Collector"
Enclosure (kapsling):	ABS/Plastic, IP 30, 35 mm DIN- or wall montage
Measure BxHxD:	105x115x58 mm.
Weight:	0,5 kg
Supply voltage:	2x230 VAC (-15%/+ 10%), 50-60 Hz alt. 24 VAC +/-10%
Effect consumption:	1 W
LED-indication:	Servicediode (status display)
Ambient humidity:	0-90% RH without condensation
Ambient temperature:	0-50 gr C (drift)
EMI:	EN 60950, EN-55022, EN-61000-4-2, EN-61000-4-3, EN-61000-4-4, EN-61000-4-6
Power backup:	In case of power failure, measurement data has backup voltage for at least seven Days.

Accessories and options

The AT 7530-LL15 can be selected for communication with twisted wire (TP/FT-10) or power grid.

Installing

Easy mounting on DIN rail or directly on wall. 230 V AC.

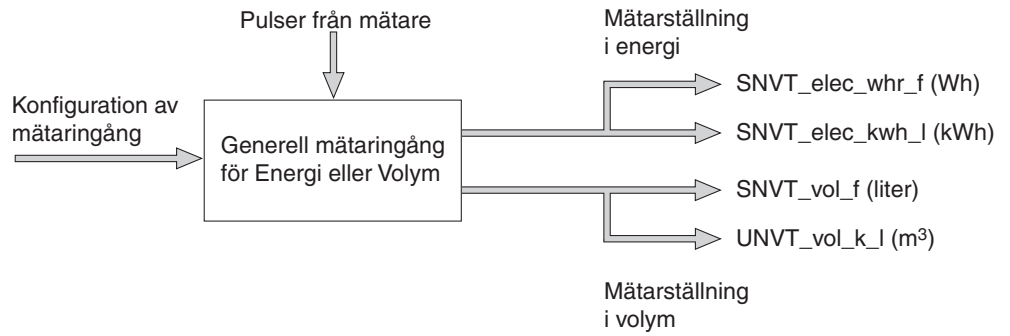
A measurement input can be used for pulse meters that measure either energy or volume.

The measurement input counts pulses presented as a measurement set on the LON network. In order to avoid the need to configure the meter input for either energy or volume the two major quantities of energy and volume are always presented. In addition, both of them are presented with two different network variable types.

Puls/LON-converter

For water- warm water meter

AT 7530-LL15



Schematic description of a measurement input