

Internet_Variants

Dimension range	PN	Temperature range	Material
G 3/4-G 1	16	+1° to 90° C	Combined unit

Range of application

For installation of water meters.

Program text

Water meter console AT 7358-.... with fixed wall distance, with bellows in stainless steel.

Water meter console AT 7358-....BV with fixed wall distance with bellows in stainless steel, with built in check valve of the type BV.

Water meter console AT 7358-....-1 with adjustable wall distance with bellows in stainless steel.

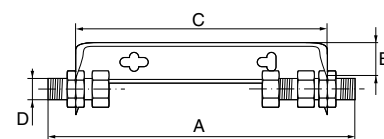
Water meter console AT 7358-....-1BV with adjustable wall distance with bellows in stainless steel, with built in check valve.



AT 7358

Detail specification

Component	Material
Meter console	Stainless steel 1.4006
Couplings	Brass GK-Ms 60
Compression sealing/flat seal	NBR-rubber



Dimensions and weight

AT article no	q _n	Build length water meter	Connection measurements	A	B (wall distance)	C	D	Weight	RSK-no
7358-110	1,5	110	G20	20	50 (höjd 40)	14	G1	0,3	518 34 94
7358-110V	1,5	110	G20	5	50 (höjd 40)	8	G1	0,7	518 34 95
7358-110-2	1,5 x 2 st.	110	G20	20	50 (höjd 140)	14	G1	0,8	518 34 96
7358-110-2V	1,5 x 2st	110	G20	5	50 (höjd 140)	8	G1	1,5	518 34 97
7358-190	2,5	190	G25	25	85	8	G2	1,2	518 34 41
7358-220	2,5	190-220	G25	35	85	0	G2	1,3	518 34 42
7358-260	5-6	260	G32	38	91	0	G2	2,1	518 34 43
7358-300	10	300	G50	44	130	0	G4	3,8	518 34 44
7365-I3	0,6/1,5	110 mm.	G20	51	L=432, H=552, D=107	0	G15		G15

Dimensions in mm, weight in kg

Function and design

The meter console's bellows are made in stainless steel. This gives the console stability with a satisfying corrosion protection. The meter console has a fixed and adjustable coupling. The fixed coupling is complete in one piece by the mounting bracket. The adjustable coupling has a compression sealing in rubber. This gives

the coupling full bore for all models and the possibility to retighten the compression nut.

Dimensioning

Dimensioning of water meter/meter consoles should be done with accordance with VAVs publication VAV P100.

Here it is said that in a building with multiple apartments you should parallel connect water meters. (See further section about parallel connections, AT 7360.)

When only one water meter is used dimensioning can be done according to the table below.

AT article no	q _n	Build length	Apartment buildings	House
		water gauge	number of apartment	number of houses per group
7358-190	2	190	1-8	1-7
	5			
7358-220	2	190-220	1-8	1-7
	5			
7358-260	-	260	9-40	8-35
7358-300	1	300	41-90	36-75
	0			

Accessories and options

Water meter console with fixed wall distance with a built in check valve

Dimensions and weight according to the standard model.

The check valve has a spring loaded cone, with a soft sealing ring. The standard models of the Armatec-consoles can also be completed afterwards with a check valve through replacing the adjustable sleeve with a built in check valve.

Built in check valve

Water meter console with fixed wall distance, with built in check valve					
AT articles no	q _n	Build length water meter	DN	AT article no	RSK-no
				ingoing check valve sleeve	
7358-190BV	2,5	190	G20	7079-20BV	518 34 65
7358-220BV	2,5	190-220	G20	7079-20BV-1	518 34 66
7358-260BV	6	260	G25	7079-25BV	518 34 67
7358-300BV	10	300	G40	7059M40	518 34 68

Rätten till ändringar utan föregående meddelande förbehålls.
Armatec ansvarar inte för eventuella tryckfel eller misstänksfel.
Dokumentet får kopieras endast i sin helhet.

Water meter console with adjustable wall distance

Water meter console with <i>adjustable</i> wall distance							
AT articles nr	q _n	Build length		DN	Wall distance	Weight	RSK-no
		water meter					
7358-190-1	2,5	190		G20	100-145	1,5	518 34 45
7358-220-1	2,5	190-220		G20	100-145	1,6	518 34 57
7358-260-1	6	260		G25	100-145	2,5	518 34 46
7358-300-1	10	300		G40	160-210	4	518 34 58

Check valve type BV

Water gauge console with adjustable wall distance, with built in check valve

Dimensions and weight according to previous model.

Check valve type BV

Water gauge console with <i>adjustable</i> wall distance, with built in check valve						
AT article number	q _n	Build length		AT article no		
		water gauge		Ingoing	check valve sleeve	
7358-190-1BV	2,5	190		G20	7079-20BV	518 34 84
7358-220-1BV	2,5	190-220		G20	7079-20BV-1	518 34 85
7358-260-1BV	6	260		G25	7079-25BV	518 34 86
7358-300-1BV	10	300		G40	7079-40BV	518 34 87

Marking

Armaterc meter consoles are marked with AT article numbers.

How to order

Example: AT 7358-190-1BV			
AT 7358	-190	-1	BV
Article number	Max. build length meter 110 mm qn 0,6/1,5 190 mm qn 2,5 220 mm qn 2,5 260 mm qn 6 300 mm qn 10	-1 = adjustable wall distance (not for 110 mm.) - 2 = double console for 110 mm.	BV = with check valve (not for 110 mm.) -V = incl. two shut-off valves (to 110 mm. console)