

# Ball Valve

AT 3700, 3701 Viridi

<b>Dimension range</b> DN 10-50, 1/4"-2"	<b>PN</b> 25	<b>Temperature range</b> -30 - 150 °C	<b>Material</b> Lead-free brass (<0,1%)
---	-----------------	--	--

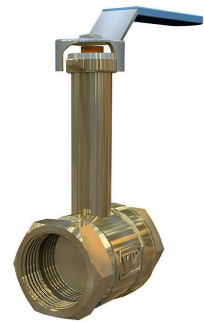
## Range of Application

Viridi Shut-off valve, silicon free for heating, cooling, air and gas systems. The valve can also be used for vacuums and lighter oils (such as diesel). See also the "installation" section. Silicone free. For tap water, cooling and heating systems (fluid group 2) -30°C to +130°C applies. For combustible liquids max 16 bar.

### PSB.1 Ball valve

Viridi ball valve in DZR lead free brass (lead content under 0,1%) AT 3700, G ... With full bore, internal thread and steel lever. Gasket box of graphite and teflon coated ball. Viridi ball valve AT3700 is approved for installation where demands from Byggvarubedömingen and SundaHus have been made.

Viridi ball valve in DZR lead free brass (lead content under 0,1%) AT3701, G ... With full bore, internal thread, casted long stem neck and steel lever. Gasket box of graphite and tefloncoated ball. Viridi ball valve AT 3701 is approved for installation where demands from Byggvarubedömingen and SundaHus have been made.



AT 3701



AT 3700V

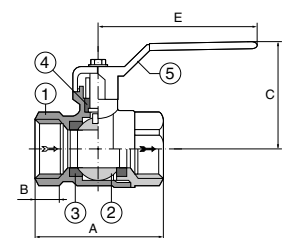
## Quality Assurance

The viridi valves can be used for liquids or gases group 1 and 2 according to PED 2014/68/EU.

The viridi valves are included by AFS 2016:1, 8§, the Pressure Equipment Directive (PED 3,3) and can therefore not be CE-marked.

## Material specification

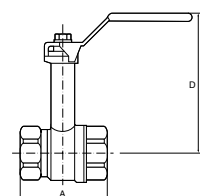
Position	Component	Material
1	Body	Lead-free DZR brass (below 0,1%Pb)
2	Ball	Lead-free brass, Teflon coated
3	Seat rings	PTFE
4	Gasket box	graphite
5	Lever	steel with blue, plastic coating, PVC phthalate free



## Dimension and Weight

Connection	A	B	C	D	E	Stem	Weight
G 1/2	49	11,5	53	98	90	7*6	0,23
G 3/4	58	12	41	101	90	7*6	0,31
G 1	67	14,5	65	110	125	9*8	0,51
G 1 1/4	81	16	71	120	125	9*8	0,81
G 1 1/2	94	17	79	132	140	11*10	1,25
G 2	110	19	87	140	140	11*10	1,80

Measurements in mm, weight in kg



## Function and Design

AT3700/3701 have a full bore and an adjustable graphite box. AT3700 has a so

called "blow-out safe" stem. AT3701 has a long stem neck, suitable for mounting, where the valve will be insulated. Valve DN40 and DN50 can be aquired with soft closing handle, 3700V40 and 3701V50.

### Accessories and Options

Valves with butterfly handle see 3702. Handles in stainless steel 3604RFxx-xx. The valves can be equipped with locking device (AT 3719) for open and closed position. Stem's square-measure has to be specified when ordering.

Alternative copnnections:

3711 Soldering couplings.

3713/3714 Olive and nut coupling.

3716 Smooth press-ends.

### Installation

All valves have an internal pipe thread. Tightening of the gasket box can be required for air and gas systems if the pressure exceeds 6 bar.

### Marking

Manufacturer and DN.

### How to order

Dimension	AT 3700		AT 3701	
	Order no.	RSK-no.	Order no.	RSK-no.
G 1/2	3700-15	450 74 15	3700-15	450 74 24
G 3/4	-20	450 74 16	-20	450 74 26
G 1	-25	450 74 17	-25	450 74 27
G 1 1/4	-32	450 74 18	-32	450 74 28
G 1 1/2	-40	450 74 19	-40	450 74 29
G 2	-50	450 74 20	-50	450 74 31
G 1 1/2	-		3701V40	450 74 21
G 2	-		3701V50	450 74 23